

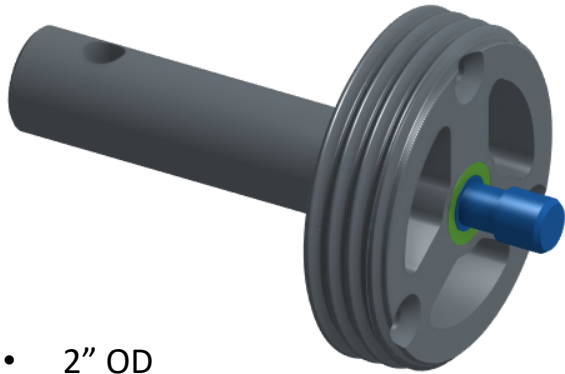


the drain plug reinvented™

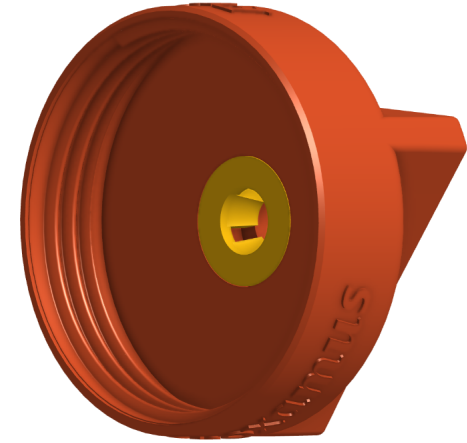


Technical Specifications

garboard



- 2" OD
- .5" thick
- 2.875" barrel
- 1.75" TFA triple drain cavity
- NPT water tight threads
- 3 mounting holes - #6 X 1.25
- ABS Plastic – injectable



cap

- 2.25" OD
- 1.125" thick
- NPT water tight threads
- ergonomic triangular handle
- ABS Plastic - injectable

proximity sensor



- hermetically sealed in Valox housing
- extended operation in extreme environments
- -40 to 140 C operating range
- UL 94 rating

gasket & o-ring

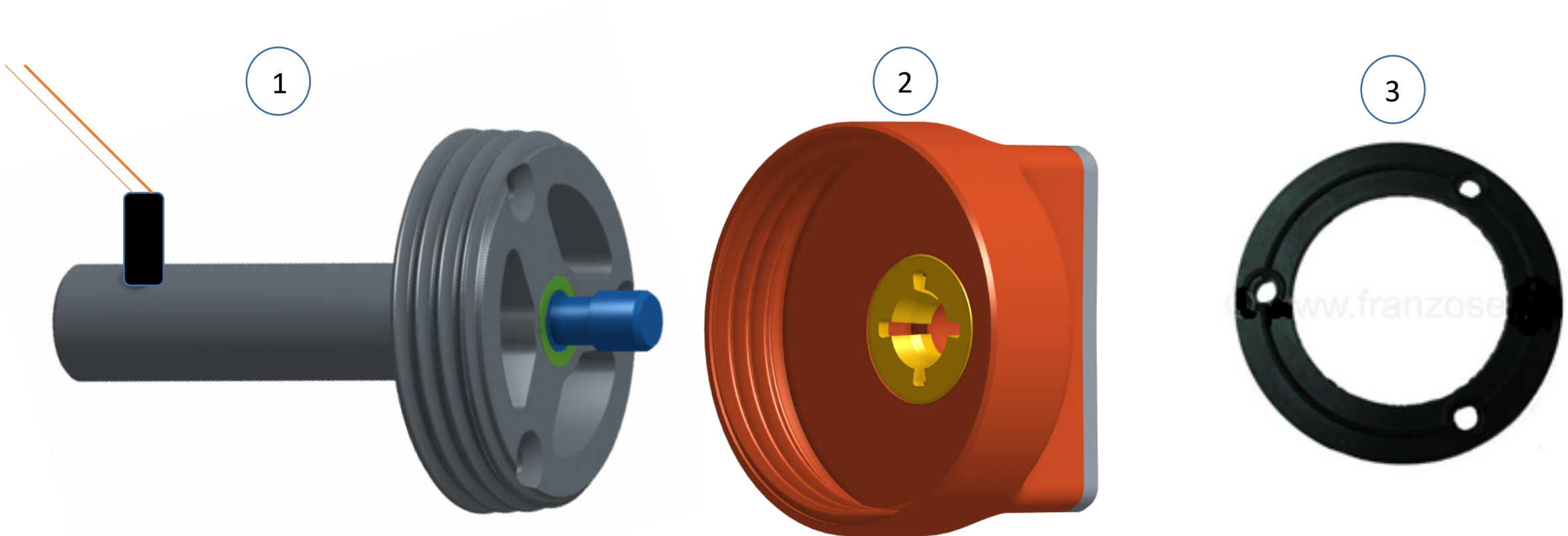


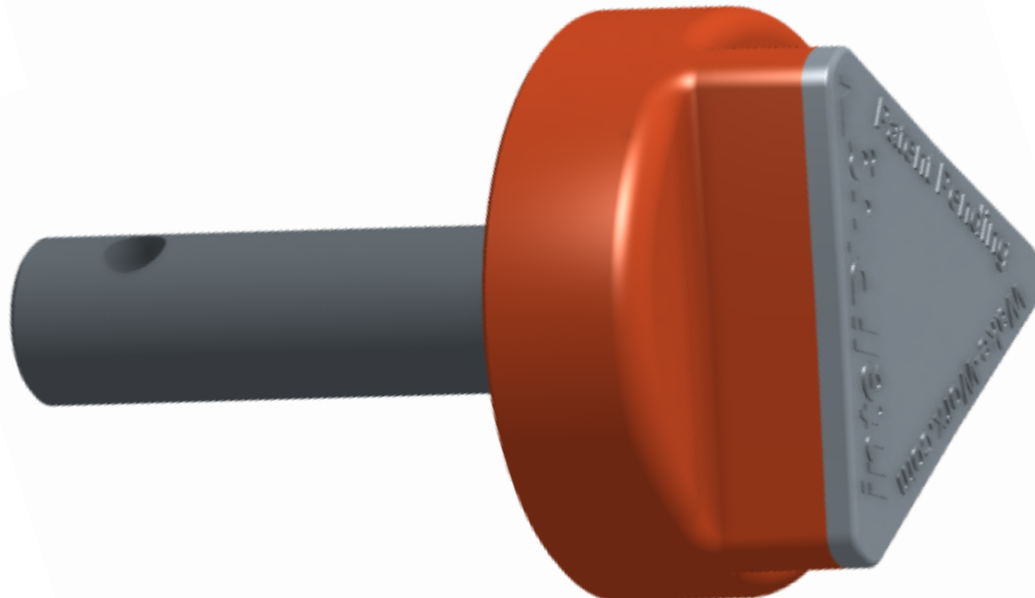
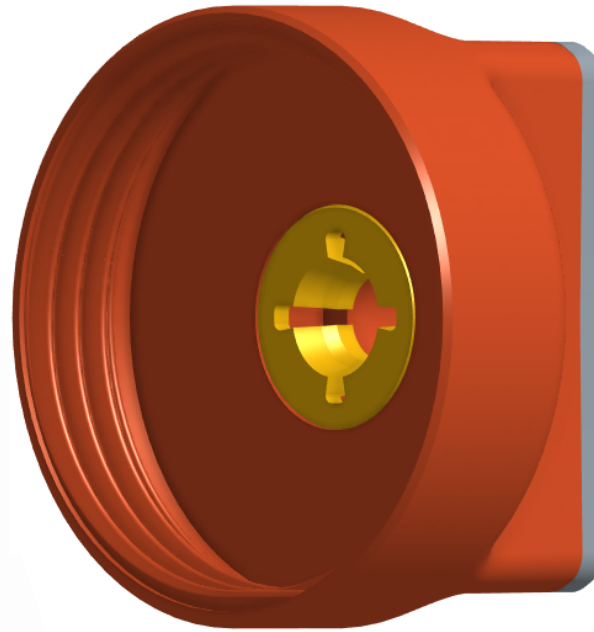
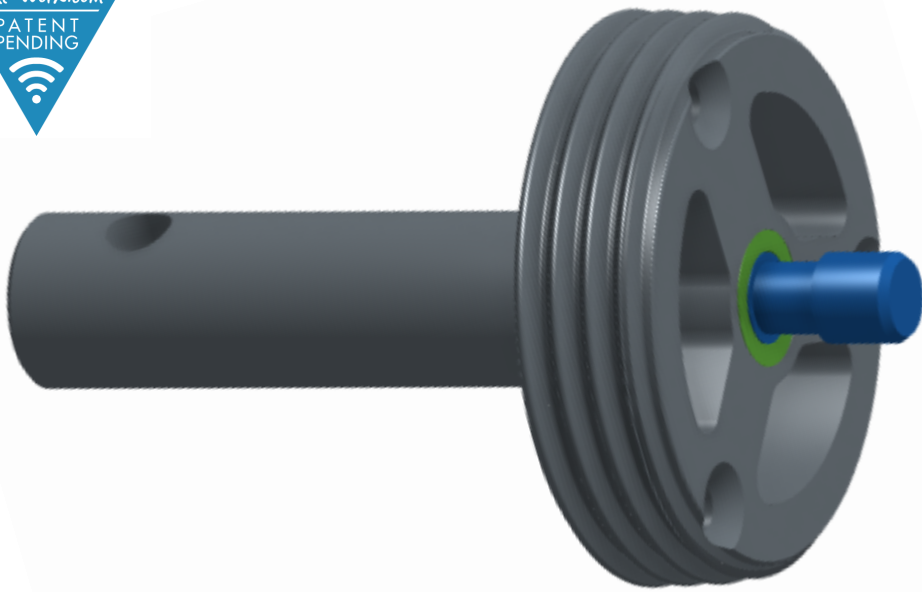
- Buna N (nitrile)
- fuel & lubricant resistant

inteliPlug™ installation instructions

Parts List

1. Garboard with sensor installed
2. Cap
3. Gasket





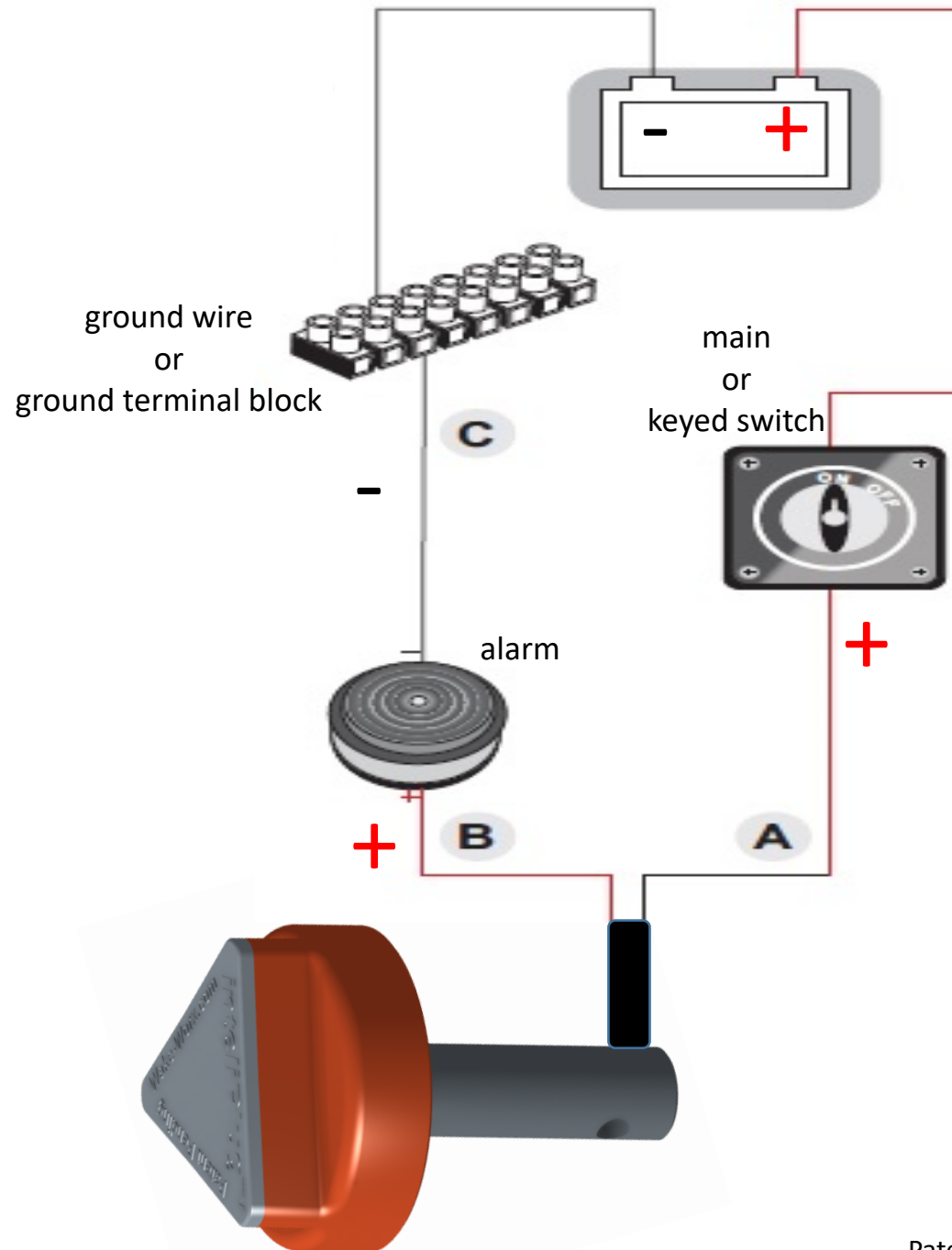
IMPORTANT NOTICE

Do not make up the cap to the garboard until the garboard has been properly installed on the boat's transom. Access to the three mounting screw holes is required for installation. Follow step #4 to install the cap.



Garboard & Cap Installation Instructions

1. Drill out the garboard cavity using 1 3/8" hole saw.
2. Before installing the garboard, ensure that the rubber gasket is positioned between the garboard and the transom
3. The proximity sensor and wire leads must be oriented so that they do not come in contact with other internal bilge components.
4. Three #6 X 1" stainless steel screws are used to secure the garboard to the boat's transom. Use a 3/32" drill bit for the pilot holes.
5. Once the garboard is fully installed, make up the cap to the garboard until the cap clips into the end of the plunger. The cap is designed to remain captive.
6. Use the accompanying wiring diagram to install the alarm.



Wiring Diagram

- A. one wire lead from the sensor is connected to the positive + side of the main or keyed switch
- B. the other wire lead from the sensor is connected to the positive + side of the alarm
- C. the negative – side of the alarm is connected to a ground wire or to the ground terminal block.