

**inteliPlug™**

Wake-WorX.com

PATENT  
PENDING

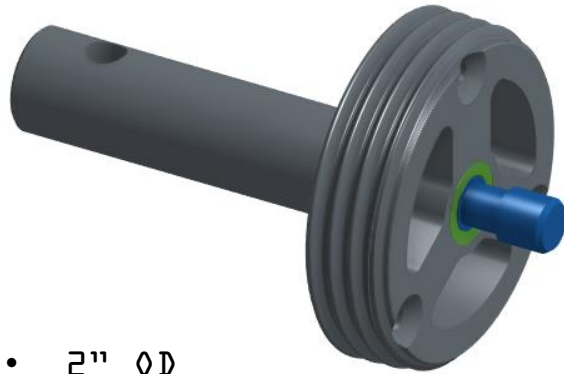


the drain plug reinvented™

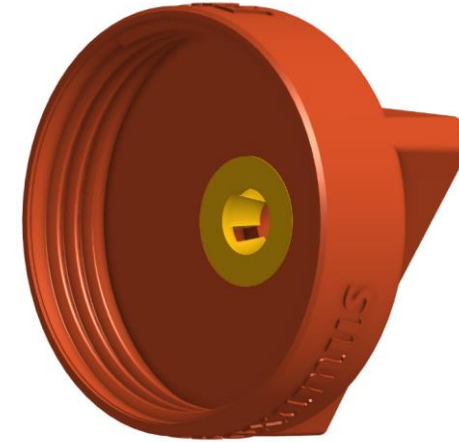


## Technical Specifications

garboard



- 2" OD
- .5" thick
- 2.875" barrel
- 1.75" TFA triple drain cavity
- NPT water tight threads
- 3 mounting holes - #6 X 1.25
- ABS Plastic - injectable



cap

- 2.25" OD
- 1.125" thick
- NPT water tight threads
- ergonomic triangular handle
- ABS Plastic - injectable

proximity sensor



- hermetically sealed in Valox housing
- extended operation in extreme environments
- -40 to 140 C operating range
- UL 94 rating
- fitted with Deutsch DT04 2P connector

gasket & o-ring



- Buna N (nitrile)
- fuel & lubricant resistant



# Parts List

1. Garboard with sensor installed
2. Cap
3. Gasket



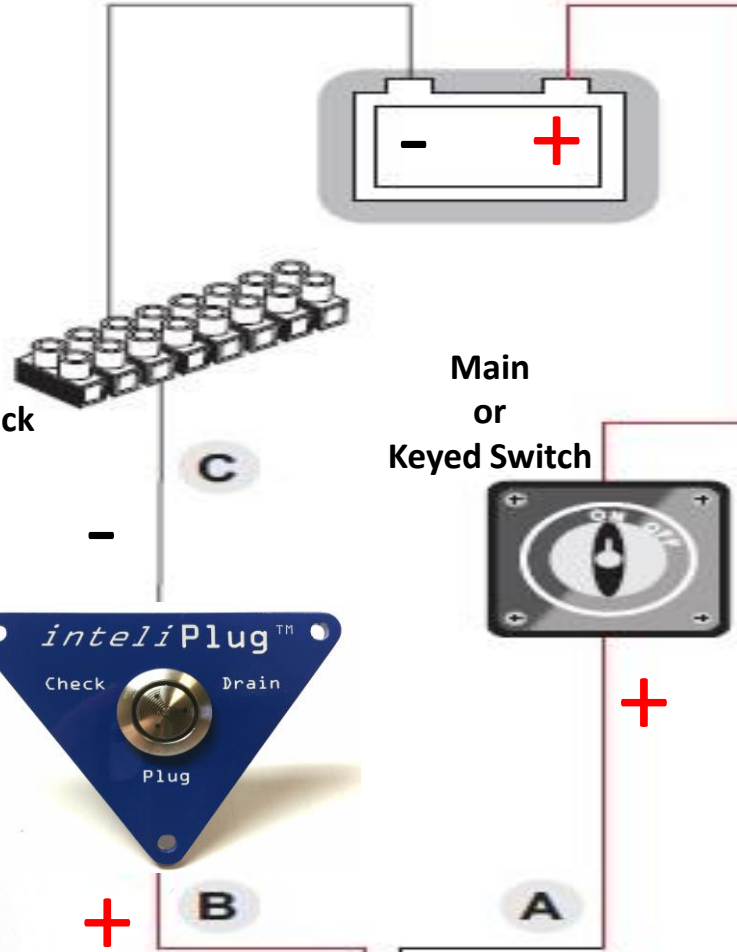


## Drain Plug and Alarm Installation Instructions

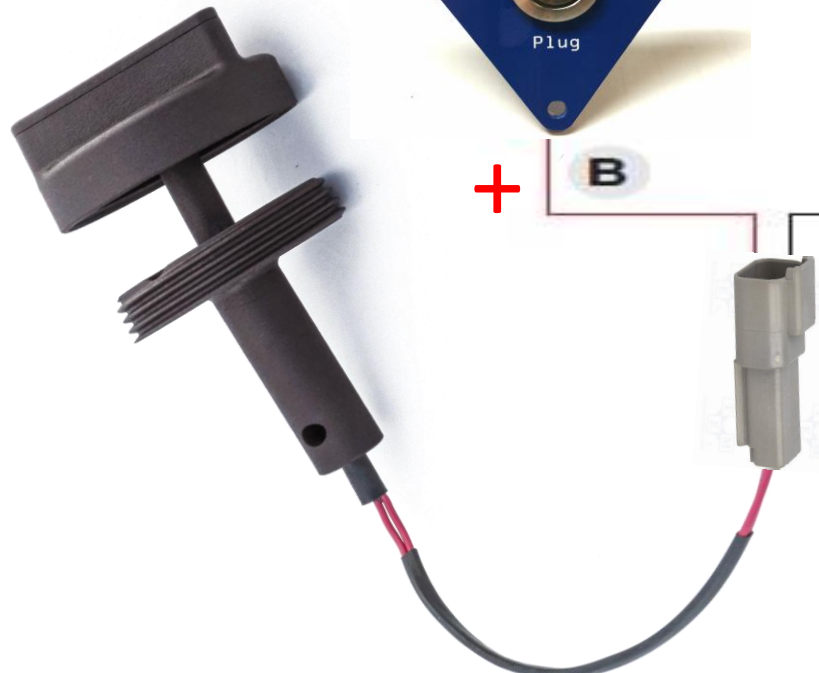
1. To get a larger opening, drill out the drain hole using 1 3/8" hole saw. Or you can install it in the existing size hole.
2. Before installing the drain, ensure that the rubber gasket is positioned between the drain and the transom
3. The proximity sensor, Deutsch plug and wire leads must be oriented so that they do not come into contact with other internal bilge components.
4. Three #6 X 1" stainless steel screws are used to secure the drain to the boat's transom. Use a 3/32" drill bit for the pilot holes.
5. **Only when the drain is fully installed, make up the cap** to the drain until the cap clips into the end of the plunger. The cap is designed to remain captive.
6. The Alarm Panel can be installed near the Battery Switch or at the Helm Station.
7. Position the panel and drill a 1 1/8" hole to pass the wire harness through and then attach the panel with the included screws.
8. Run the harness power leads to the battery switch and ground.
9. Run the wires with the Plug to the sensor on the drain plug.
10. Use the accompanying wiring diagram to wire the alarm.



Ground Wire  
or  
Ground Terminal Block



Main  
or  
Keyed Switch



## Wiring Diagram

1. Plug together the wires from the Sensor to the Wire Harness Plug. Wire A (Red) must be connected to the “Switched Side” of the Battery Switch or Ignition and should be Hot only when the switch is on.
2. Wire B (Red) lead from the sensor is connected to the Positive (+) side of the alarm.
3. Wire C (Black) the Negative (–) side of the alarm must be connected to a ground wire or to the ground terminal block.



more information @ [www.wake-worx.com](http://www.wake-worx.com)